

HELEN TOWNSHIP

Each township has six files containing six sections in each, and one file containing all 36 sections.

Helen01to06.pdf
Helen07to12.pdf
Helen13to18.pdf
Helen19to24.pdf
Helen25to30.pdf
Helen31to36.pdf
HelenAll36.pdf

The points are listed starting with the point above the SE corner and continuing in a counter-clockwise rotation around the section. This normally begins with the East point, Northeast, then North, but may also include Witness Corners, and/or Meander Corners.

Definitions

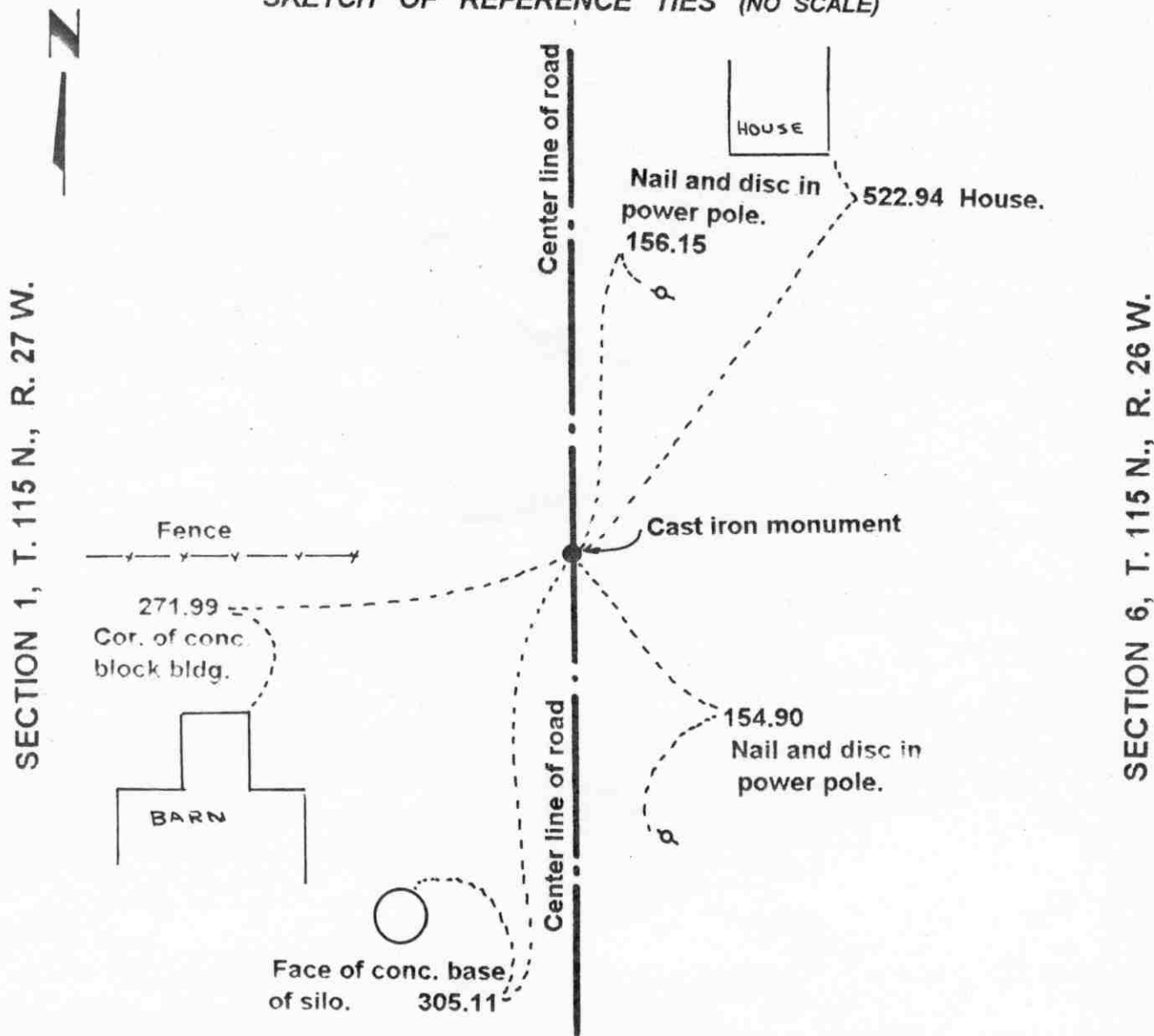
Witness Corner: A witness corner “stands in” when the true corner cannot be monumented or occupied because of difficult terrain or obstruction of the corner sight. The witness corner must be on the section line and is usually 5 or 10 chains away from the true corner.

Meander Corner: The intersection of a township, range, or section line and the banks of a navigable stream or meandering body of water.

Certificate of Location of Government Corner

East Quarter corner, Section 1 , Township 115 North, Range 27 West

SKETCH OF REFERENCE TIES (NO SCALE)



Statement of evidence relative to this corner location on sheet 2

I hereby certify that this document was prepared by me or under my direct supervision.

Willard Pellinen
Willard Pellinen
McLeod County Surveyor
License No. 9626.

Date Oct. 9, 1995

**OFFICE OF THE COUNTY RECORDER
MCLEOD COUNTY, MINNESOTA**

I hereby certify that this document was filed in this office at 9 o'clock A. M. on the 13th day of October 19 95.

Carmen Ostlie Mjelder, County Recorder

By _____, Deputy.

Document No. 268579

Certificate of Location of Government Corner
East Quarter Corner, Section 1, Township 115 North, Range 27 West

1855. John Ryan of the General Land Office originally established this corner.

August 31, 1971. The Carver County Surveyor excavated for the corner in the center of the north-south road in line with a fence to the west. They dug a hole 10 feet in diameter and 4 feet deep but found no evidence of the government corner. This location had been accepted by adjoining land owners as the quarter corner. They set an iron pipe at this location and measured 2626.63 feet to the southeast corner of Section 1 and 2626.63 feet to the northeast corner of Section 1.

September 26, 1973. The Carver County Surveyor set a cast iron monument at the corner.

This location was accepted as the government corner by Dickman Knutson, Mcleod County Surveyor.

May 15, 1995. We checked the reference ties to the monument.

Certificate of Location of Government Corner

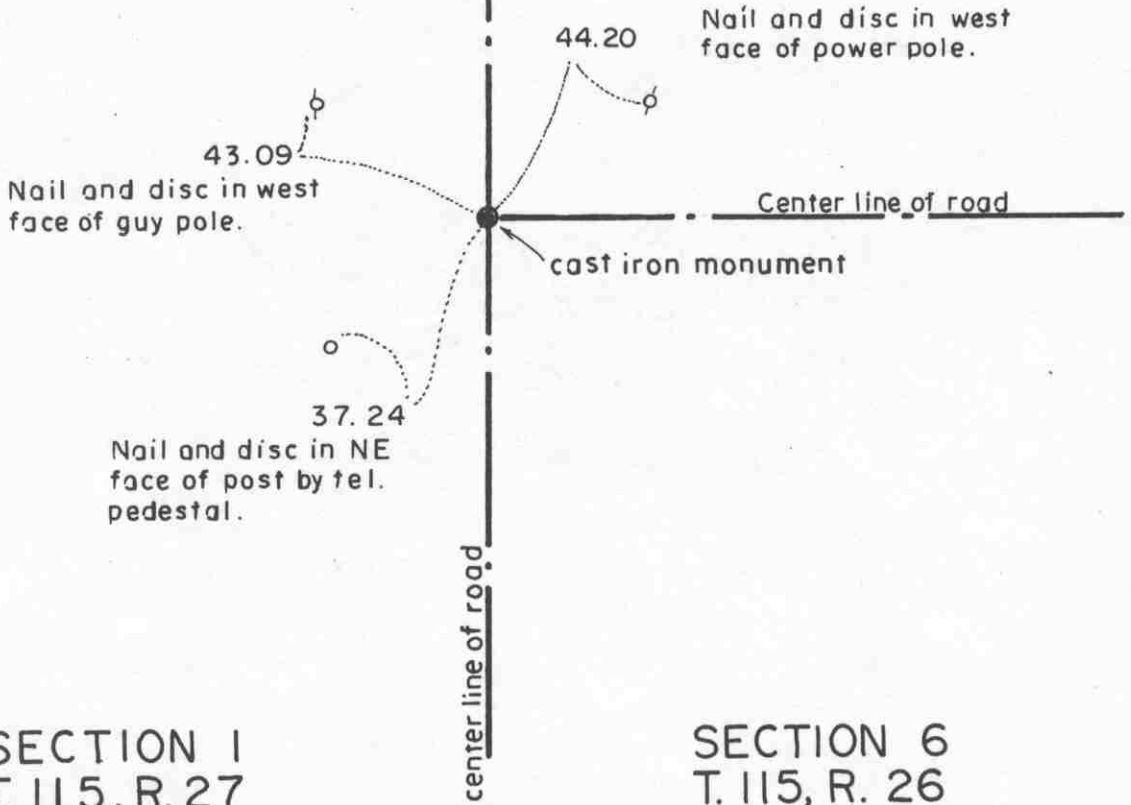
NORTHEAST corner, Section 1, Township 115 North, Range 27 West

SKETCH OF REFERENCE TIES (NO SCALE)



SECTION 36
T. 116, R. 27

SECTION 31
T. 116, R. 26



SECTION 1
T. 115, R. 27

SECTION 6
T. 115, R. 26

Statement of evidence relative to this corner location on sheet 2

I hereby certify that this document was prepared by me or under my direct supervision.

Willard Pellinen
Willard Pellinen
McLeod County Surveyor
License No. 9626.

Date April 17, 1995

OFFICE OF THE COUNTY RECORDER MCLEOD COUNTY, MINNESOTA

I hereby certify that this document was filed in this office at 9 o'clock A. M. on the 24th day of Apr 19 95.

Carmen Dotlie Gulder, County Recorder

By _____, Deputy.

Document No. 265293

***Certificate of Location of Government Corner
Northeast Corner, Section 1, Township 115 North, Range 27 West***

July, 1855. John Ryan of the General Land Office established this corner. He set a post and marked a 30 inch ash, a 30 inch elm, a 20 inch oak and a 16 inch oak for bearing trees.

1971. Carlisle Madson, Carver County Surveyor, set a cast iron monument over a found limestone monument. This location was accepted by Dickman Knutson, McLeod County Surveyor.

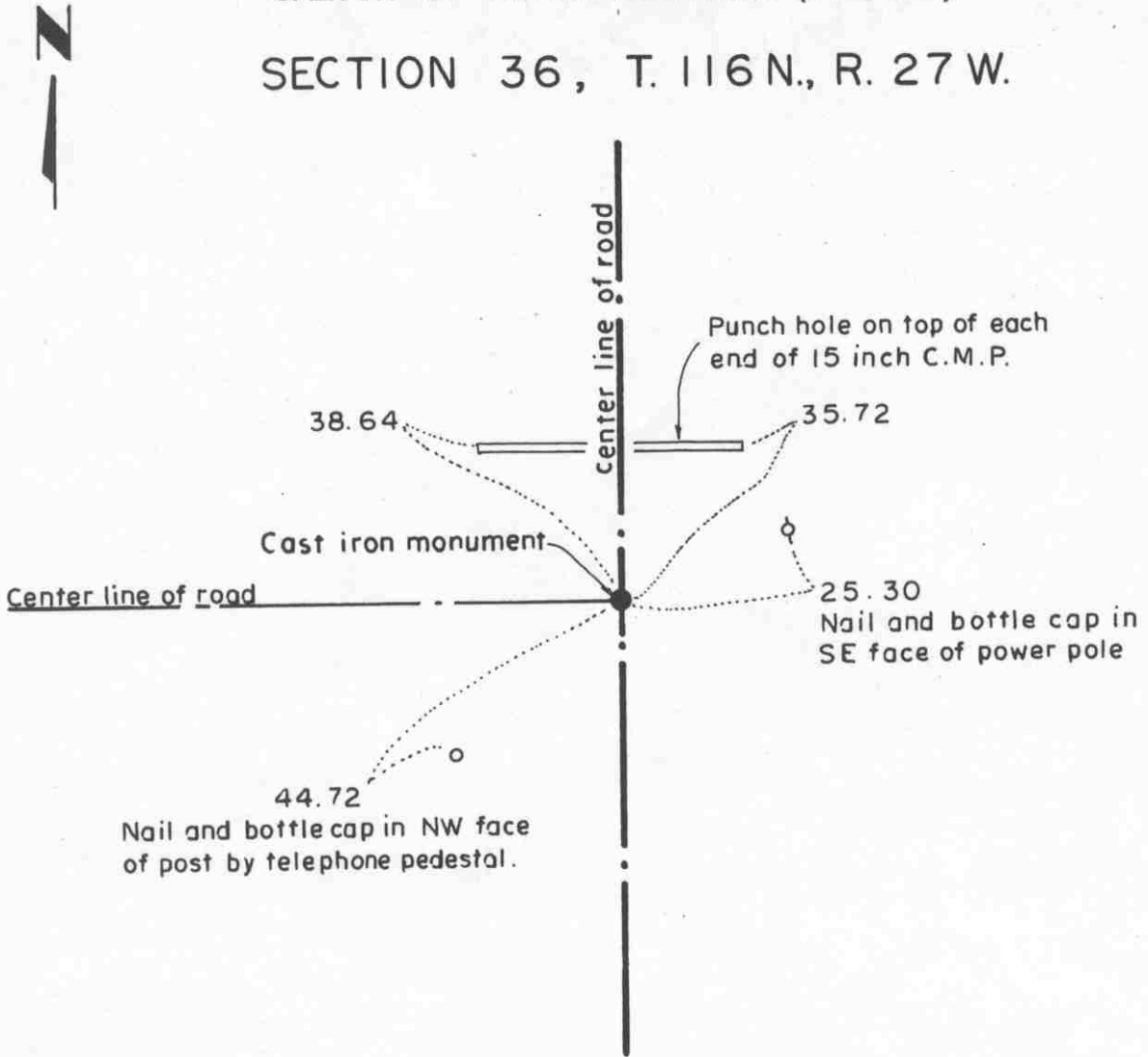
February 2, 1995. We found the monument in good condition down 8 inches below the surface of the gravel road and took available reference ties.

Certificate of Location of Government Corner

NORTH QUARTER corner, Section 1, Township 115 North, Range 27 West

SKETCH OF REFERENCE TIES (NO SCALE)

SECTION 36, T. 116 N., R. 27 W.



SECTION 1, T. 115 N., R. 27 W.

Statement of evidence relative to this corner location on sheet 2

I hereby certify that this document was prepared by me or under my direct supervision.

Willard Pellinen
Willard Pellinen
McLeod County Surveyor
License No. 9626.

Date April 17, 1995

OFFICE OF THE COUNTY RECORDER
MCLEOD COUNTY, MINNESOTA

I hereby certify that this document was filed in this office at 9 o'clock A. M. on the 24th day of April 19 95.

Carmen Potliw Gulder, County Recorder

By _____, Deputy.

Document No. 265294

Certificate of Location of Government Corner
North Quarter Corner, Section 1, Township 115 North, Range 27 West

1855. John Ryan of the General Land Office established this corner. He set a post and marked a 12 inch oak and a 10 inch oak for bearing trees.

September 15, 1969. Dickman Knutson, county surveyor found an iron pipe at the center line intersection of roads north, south and west. He took available ties.

1970. Knutson set a McLeod County cast iron monument at the corner.

February 2, 1995. We found the monument in good condition down 8 inches below the surface of the gravel road. We took new reference ties.

Certificate of Location of Government Corner

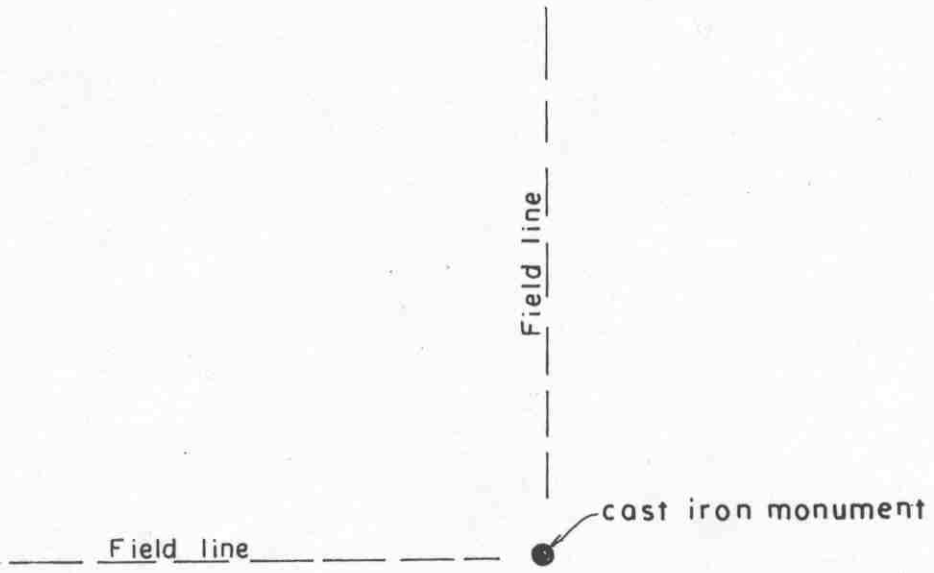
EAST QUARTER corner, Section 2, Township 115 North, Range 27 West

SKETCH OF REFERENCE TIES (NO SCALE)



SECTION 2

SECTION 1



Statement of evidence relative to this corner location on sheet 2

I hereby certify that this document was prepared by me or under my direct supervision.

Willard Pellinen
Willard Pellinen
McLeod County Surveyor
License No. 9626.

Date April 17, 1995

OFFICE OF THE COUNTY RECORDER MCLEOD COUNTY, MINNESOTA

I hereby certify that this document was filed in this office at 9 o'clock A. M. on the 24th day of Apr 19 95.

Carmen (Arlie) Mulder, County Recorder

By _____, Deputy.

Document No. 265296

Certificate of Location of Government Corner
East Quarter Corner, Section 2, Township 115 North, Range 27 West

1856. E. N. Darling of the General Land Office established this corner. He set a post and marked a 9 inch linden and a 12 inch linden for bearing trees.

1978. Adjoining land owners have accepted a rock pile as the quarter corner.

July 12, 1978. Dickman Knutson, county surveyor, set a McLeod County cast iron under the center of the rock pile. This was at the intersection of field lines north and west.

February 2, 1995. We found the monument in good condition at the intersection of field lines north and west.

Certificate of Location of Government Corner

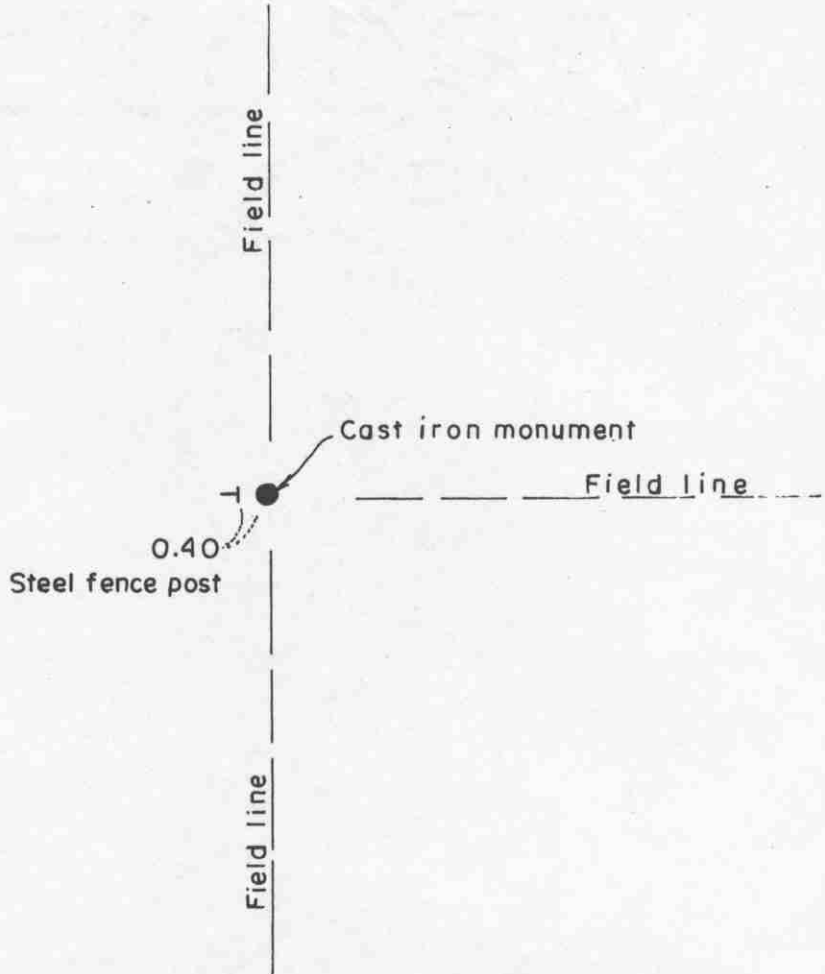
NORTHEAST corner, Section 2, Township 115 North, Range 27 West

SKETCH OF REFERENCE TIES (NO SCALE)

T.116 N., R.27 W.

SECTION 35

SECTION 36



SECTION 2

SECTION 1

T.115 N., R.27 W.

Statement of evidence relative to this corner location on sheet 2

I hereby certify that this document was prepared by me or under my direct supervision.

Willard Pellinen
Willard Pellinen
McLeod County Surveyor
License No. 9626.

Date April 17, 1995

OFFICE OF THE COUNTY RECORDER
MCLEOD COUNTY, MINNESOTA

I hereby certify that this document was filed in this office at 9 o'clock A. M. on the 24th day of Apr 19 95.

Carmen Estlie Mulder County Recorder

By _____, Deputy.

Document No. 265295

Certificate of Location of Government Corner
Northeast Corner, Section 2, Township 115 North, Range 27 West

1855. John Ryan of the General Land Office established this corner. He set a post and marked a 10 inch oak, a 12 inch oak, a 20 inch elm and a 5 inch aspen for bearing trees.

1969. Dickman Knutson, county surveyor, set a McLeod County cast iron monument in the middle of a rock pile which adjoining land owners have accepted as being the section corner.

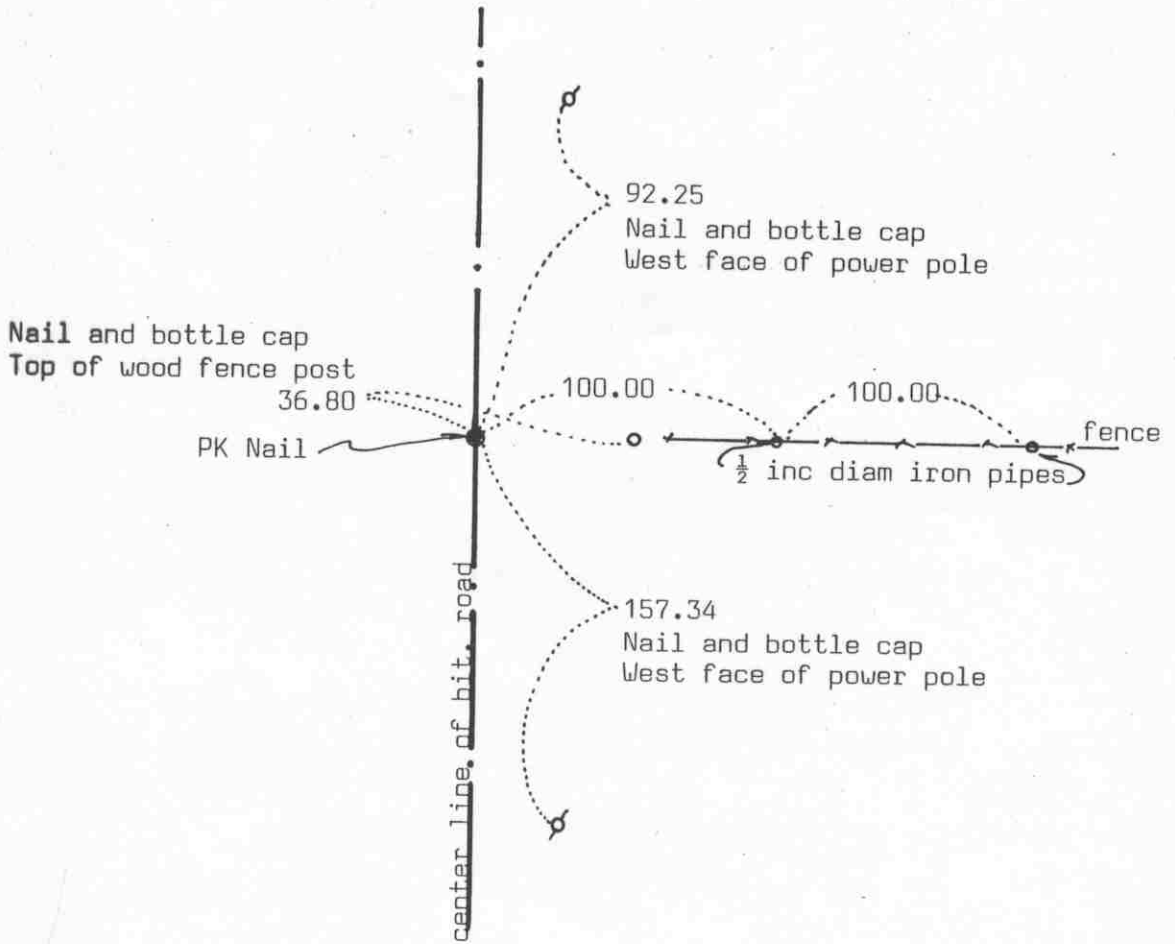
February 2, 1995. We found the monument in good condition in the middle of the rock pile, 0.4 feet east of a steel fence post.

Certificate of Location of Government Corner



SKETCH OF REFERENCE TIES (NO SCALE)

SECTION 35 T 116 R 27



SECTION 2 T 115 R 27

Statement of evidence relative to this corner location on sheet 2

I hereby certify that this document was prepared by me or under my direct supervision.

Willard Pellinen
Willard Pellinen
McLeod County Surveyor
License No. 9626

Date August 17, 1992

OFFICE OF THE COUNTY RECORDER
MCLEOD COUNTY, MINNESOTA.

I hereby certify that this document was filed in this office at 9 o'clock A.M. on the 20th day of Aug, 1992.

Sarmin O'Brien, County Recorder

By _____, Deputy

Document No. 247332

Certificate of Location of Government Corner

July, 1855. John Ryan of the General Land Office set a post and marked an oak and an aspen for bearing trees.

1940. E. L. Higgins, county surveyor, set a steel corner. He measured 2647.6 to the northwest corner of Section 2. He set the corner along the center line of the north-south road in line with fences east and west.

September 15, 1969. McCombs Knutson Associates (Dickman Knutson, county surveyor, set a McLeod County cast iron monument at the center line of the road in line with fences east and west. Adjoining property owners agree this is the correct location of the corner.

April 27, 1983. We reset the corner, old corner had been disturbed by road construction. We took new reference ties. We set a PK nail at the corner.

August 15, 1983. We reset a McLeod County cast iron monument at the corner.

May 24, 1990. We took extra reference ties, iron pipes 100.00 and 200.00 feet east of the corner along the north line of the Northeast Quarter of Section 2. Old ties to be destroyed by road construction.

December 31, 1991. We reset the corner, a PK nail, using the 1990 ties and took additional ties.

We accept the monument set by Knutson as marking the correct location of the quarter corner. The center line of the road and the fences had perpetuated the location of the corner.

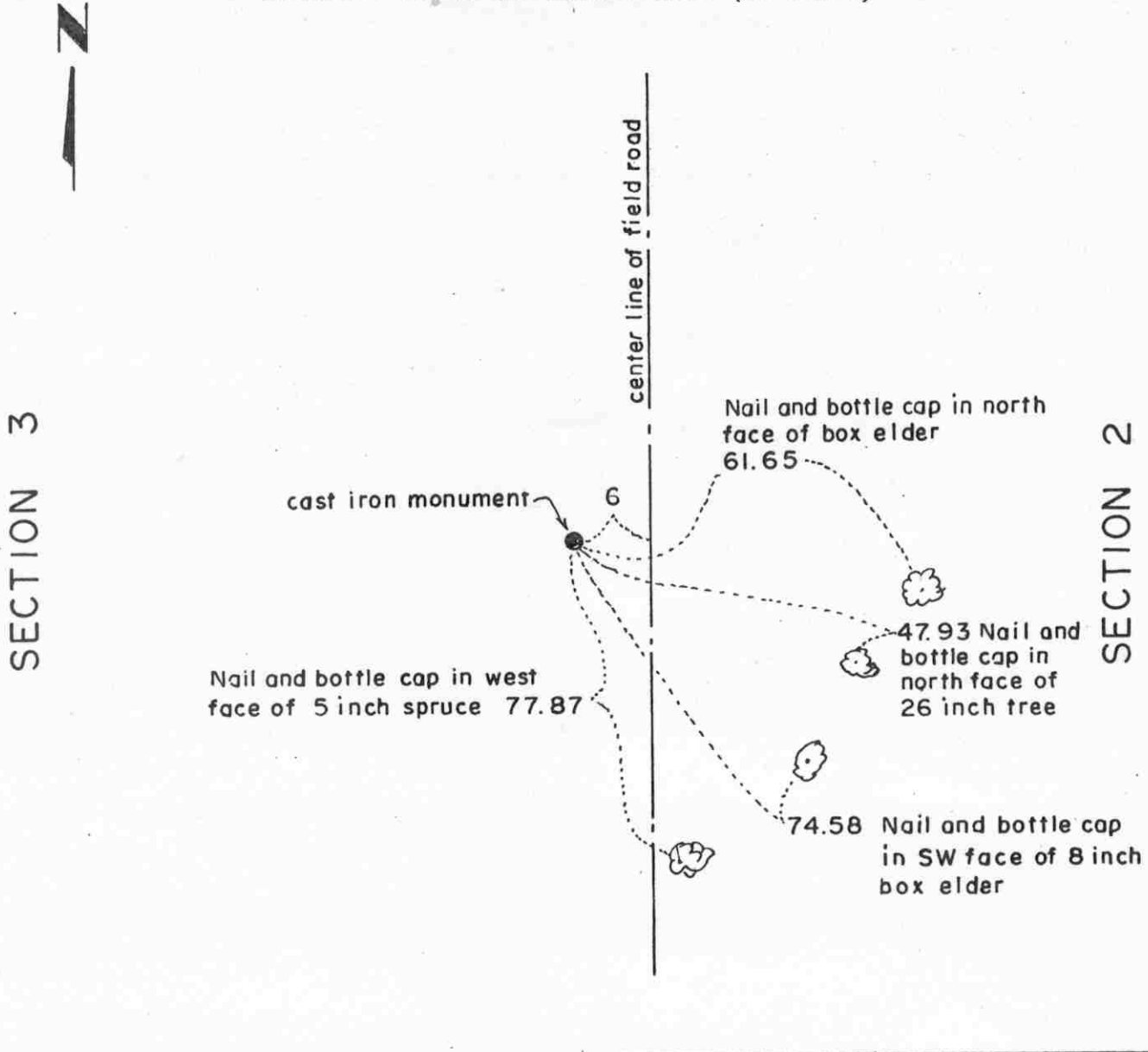
This corner is within 2 feet of being on a split between the section corners and within $1\frac{1}{2}$ feet of being on a straight line between the corners.

We measured 5265.82 feet to the north quarter corner of Section 35, compared with a distance of 5266 feet by the county highway department in 1924.

Certificate of Location of Government Corner

EAST QUARTER corner, Section 3, Township 115 North, Range 27 West

SKETCH OF REFERENCE TIES (NO SCALE)



Statement of evidence relative to this corner location on sheet 2

I hereby certify that this document was prepared by me or under my direct supervision.

Willard Pellinen
 Willard Pellinen
 McLeod County Surveyor
 License No. 9626.

Date Oct. 15, 1994.

OFFICE OF THE COUNTY RECORDER
 MCLEOD COUNTY, MINNESOTA

I hereby certify that this document was filed in this office at 9 o'clock A. M. on the 13th day of January, 19 95.

Carmen Ottilie Mulder, County Recorder

By _____, Deputy.

Document No. 263695

Certificate of Location of Government Corner
East Quarter Corner, Section 3, Township 115 North, Range 27 West

1856. E. N. Darling of the General Land Office originally established this corner. He set a post in a dry slough and marked two 12 inch oaks for bearing trees.

No property lines running east or west from this corner.

April 25, 1983. Guido Lilienthal, in the West Half of Section 2, said the corner is on the west side of a north-south field road. He didn't know where the corner should be north or south.

May 16, 1983. We set a McLeod County cast iron monument on the northerly prolongation of the center line of a township road to the south and on a proration of the Government distances between the section corners. The monument is 6 feet west of the center line of the field road, as per the testimony by Mr. Lilienthal. Field line running east and west 1/4 mile south falls within 4 feet of being on the 1/16 line. Field line near the center of Section 3 is about 6 feet north of the east-west quarter line of Section 3 and field line east of the center of Section 2 varies between 6 and 9 feet south of the east-west quarter line of Section 2. We took available reference ties to the monument.

Certificate of Location of Government Corner

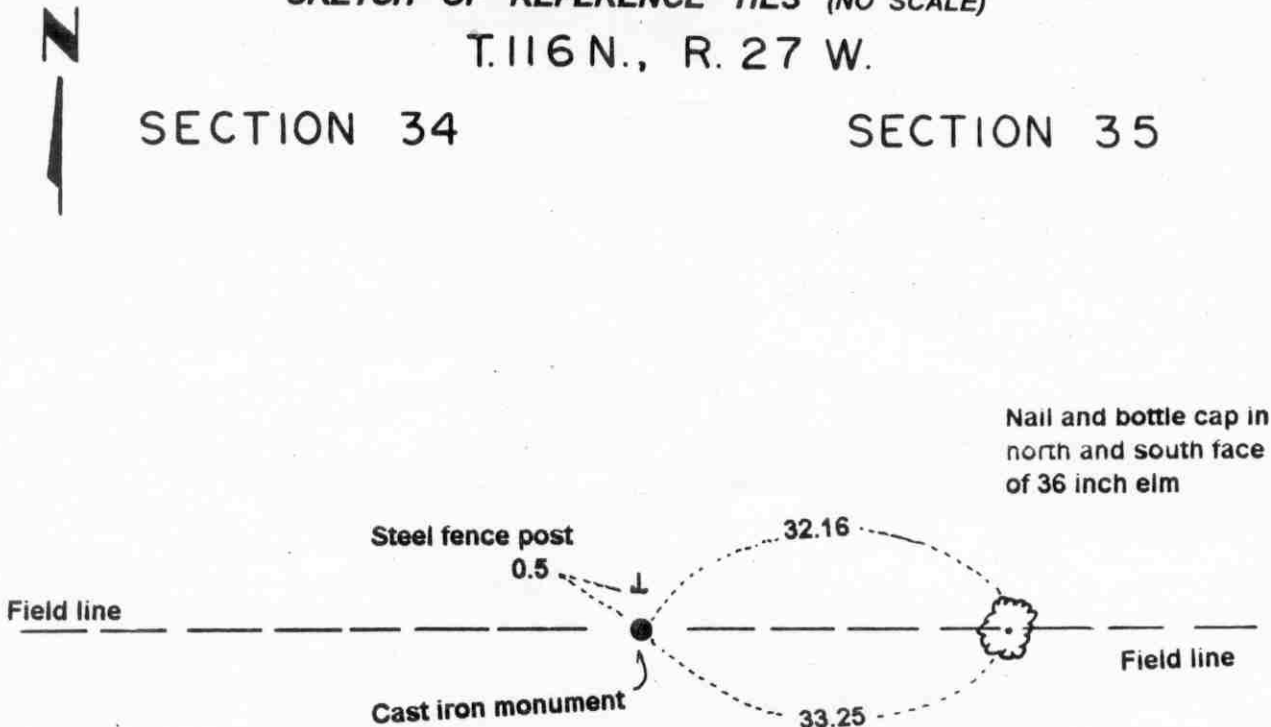
NORTHEAST corner, Section 3, Township 115 North, Range 27 West

SKETCH OF REFERENCE TIES (NO SCALE)

T. 116 N., R. 27 W.

SECTION 34

SECTION 35



SECTION 3

SECTION 2

T. 115 N., R. 27 W.

Statement of evidence relative to this corner location on sheet 2

I hereby certify that this document was prepared by me or under my direct supervision.

Willard Pellinen
Willard Pellinen
McLeod County Surveyor
License No. 9626.

Date Sept. 7, 1995

OFFICE OF THE COUNTY RECORDER
MCLEOD COUNTY, MINNESOTA

I hereby certify that this document was filed in this office at 9 o'clock A. M. on the 14th day of Sept 19 95.

Carmen Ostlie Muder, County Recorder

By _____, Deputy.

Document No. 268046

Certificate of Location of Government Corner
Northeast Corner, Section 3, Township 115 North, Range 27 West

1855. John Ryan of the General Land Office established this corner. He set a a post and marked 2 six inch aspens, a 12 inch linden and a 10 inch oak for bearing trees.

1969. Dickman Knutson, county surveyor, found a 1 1/2 inch diameter iron pipe and took available reference ties. This was within 1/2 foot of 1940 distance to the north quarter corner of Section 2 and within 1/2 foot of 1940 distance to a found iron pipe a quarter mile east.

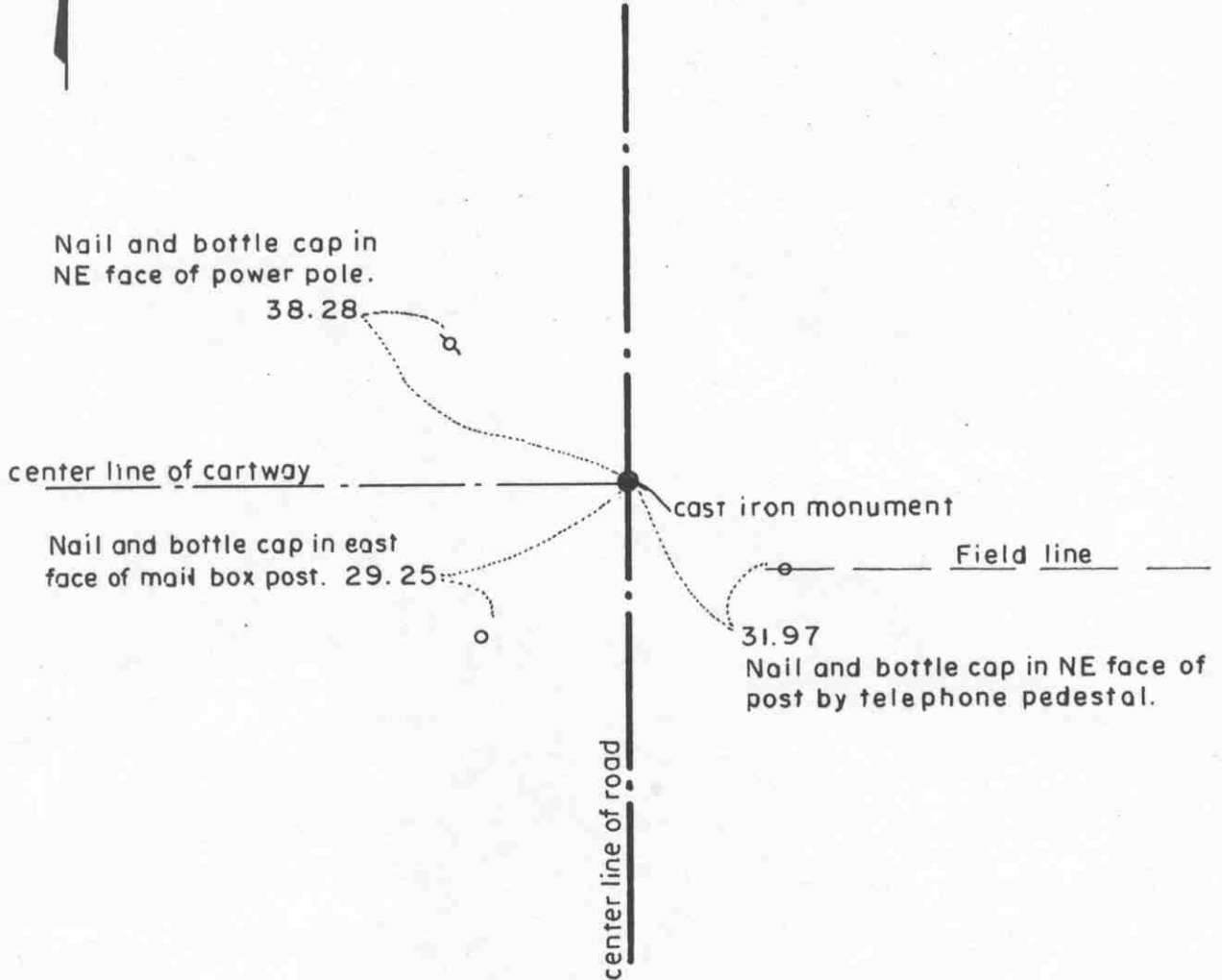
April 10, 1995. We found the monument in good condition down 3 inches below the surface and took new available ties.

Certificate of Location of Government Corner

NORTH QUARTER corner, Section 3, Township 115 North, Range 27 West

SKETCH OF REFERENCE TIES (NO SCALE)

SECTION 34, T.116 N., R.27 W.



SECTION 3, T.115 N., R.27 W.

Statement of evidence relative to this corner location on sheet 2

I hereby certify that this document was prepared by me or under my direct supervision.

Willard Pellinen
Willard Pellinen
McLeod County Surveyor
License No. 9626.

Date April 17, 1995

OFFICE OF THE COUNTY RECORDER
MCLEOD COUNTY, MINNESOTA

I hereby certify that this document was filed in this office at 9 o'clock A.M. on the 24th day of Apr 19 95.

Carmen Ostlie Mulder County Recorder

By _____, Deputy.

Document No. 265297

Certificate of Location of Government Corner
North Quarter Corner, Section 3, Township 115 North, Range 27 West

1855. John Ryan of the General Land Office established this corner. He set a post and marked two 10 inch oaks for bearing trees.

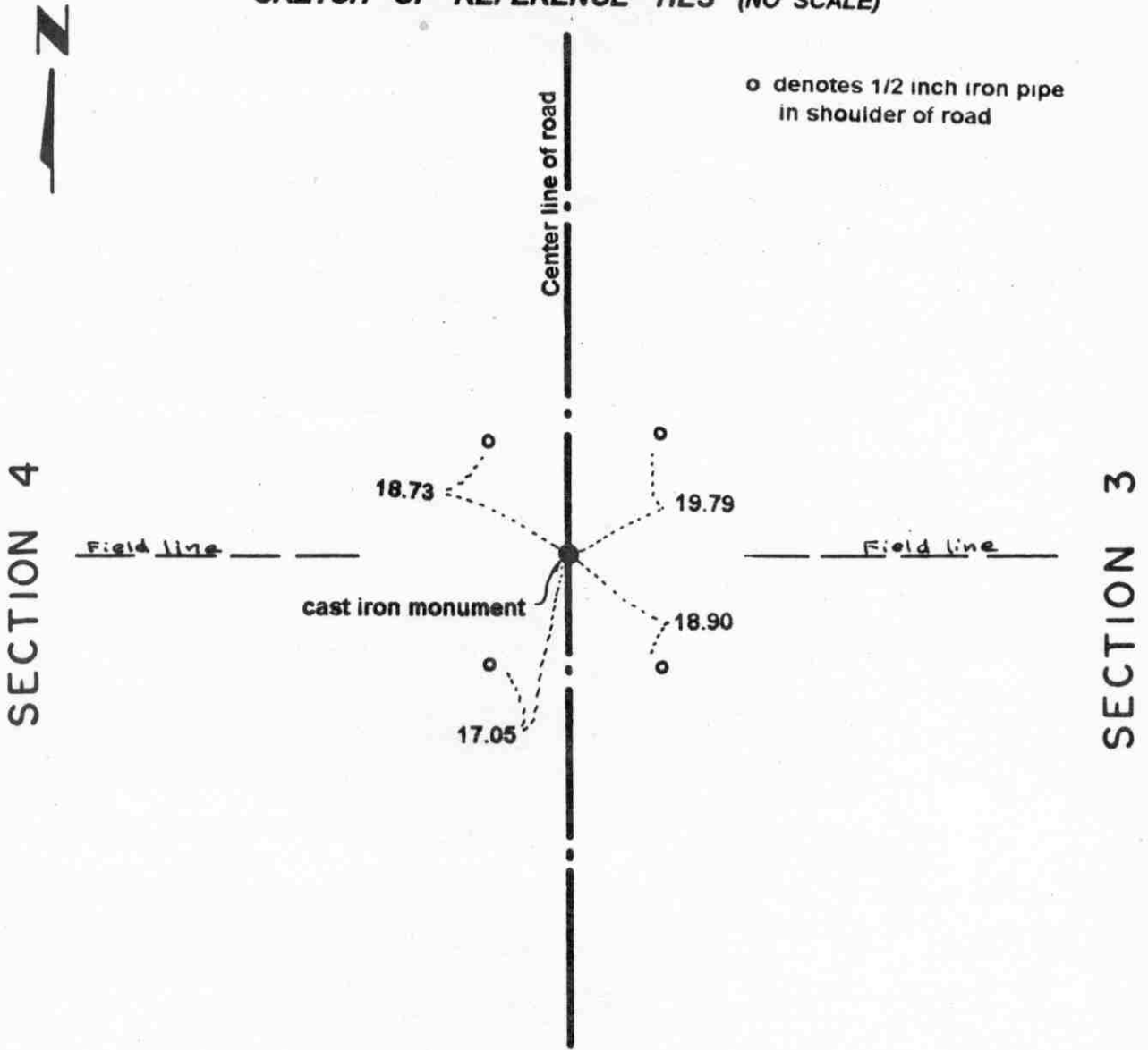
September, 1969. Dickman Knutson, county surveyor, found an iron pipe at the center line intersection of a north-south road and a cartway to the west. This point has been accepted by adjoining land owners as the quarter corner. Knutson replaced the iron pipe with a McLeod County cast iron monument and took reference ties.

February 2, 1995. We found the monument in good condition down 8 inches below the surface of the gravel road and took new ties.

Certificate of Location of Government Corner

East Quarter corner, Section 4, Township 115 North, Range 27 West

SKETCH OF REFERENCE TIES (NO SCALE)



Statement of evidence relative to this corner location on sheet 2

I hereby certify that this document was prepared by me or under my direct supervision.

Willard Pellinen
Willard Pellinen
McLeod County Surveyor
License No. 9626.

Date Aug. 7, 1995

OFFICE OF THE COUNTY RECORDER MCLEOD COUNTY, MINNESOTA

I hereby certify that this document was filed in this office at 9 o'clock A. M. on the 8th day of August 19 95.

CARMEN ORTUE MILDORF, MCLEOD COUNTY RECORDER, County Recorder

By Thyllis Sporkowick, Deputy.

Document No. 267422

Certificate of Location of Government Corner
East Quarter Corner, Section 4, Township 115 North, Range 27 West

1856. E. N. Darling of the General Land Office established this corner. He set a post and marked two 7 inch aspens for bearing trees.

1975. Gilbert Engelmann, who lived in the Northeast Quarter of Section 4 said there was a "marker" in the center line of the north-south gravel road in line with field lines east and west, but said it was pulled out by a road grader.

November 25, 1975. Dickman Knutson, county surveyor, set a McLeod County cast iron monument at the location shown by Mr. Engelmann and took reference ties.

March 30, 1995. We found the monument in good condition below the surface of the gravel road and took new reference ties.

Certificate of Location of Government Corner

NORTHEAST corner, Section 4, Township 115 North, Range 27 West

SKETCH OF REFERENCE TIES (NO SCALE)

T. 116 N., R. 27 W.

SECTION 33

SECTION 34



Nail and bottle cap in
north face of power pole
26.91

Wood fence post
1.3

Cast iron monument

Field line

Fence

SECTION 4

SECTION 3

T. 115 N., R. 27 W.

Statement of evidence relative to this corner location on sheet 2

I hereby certify that this document was prepared by me or under my direct supervision.

Willard Pellinen
Willard Pellinen
McLeod County Surveyor
License No. 9626.

Date June 9, 1995

OFFICE OF THE COUNTY RECORDER
MCLEOD COUNTY, MINNESOTA

I hereby certify that this document was filed in this office at 2 o'clock P.M. on the 13th day of June 19 95.

CARMEN OSTLE MILDFR., MCLEOD COUNTY RECORDER

County Recorder

By Phyllis Sopotowiak, Deputy.

Document No. 266251

Certificate of Location of Government Corner
Northeast Corner, Section 4, Township 115 North, Range 27 West

1855. John Ryan of the General Land Office established this corner. He set a post and marked two 10 inch aspens, an 8 inch aspen and a 7 inch aspen for bearing trees.

September, 1969. Dickman Knutson, county surveyor, set a McLeod County cast iron monument at the intersection of fences. Fences north, south and east. This has been accepted as the corner by adjoining land owners. Knutson took available reference ties.

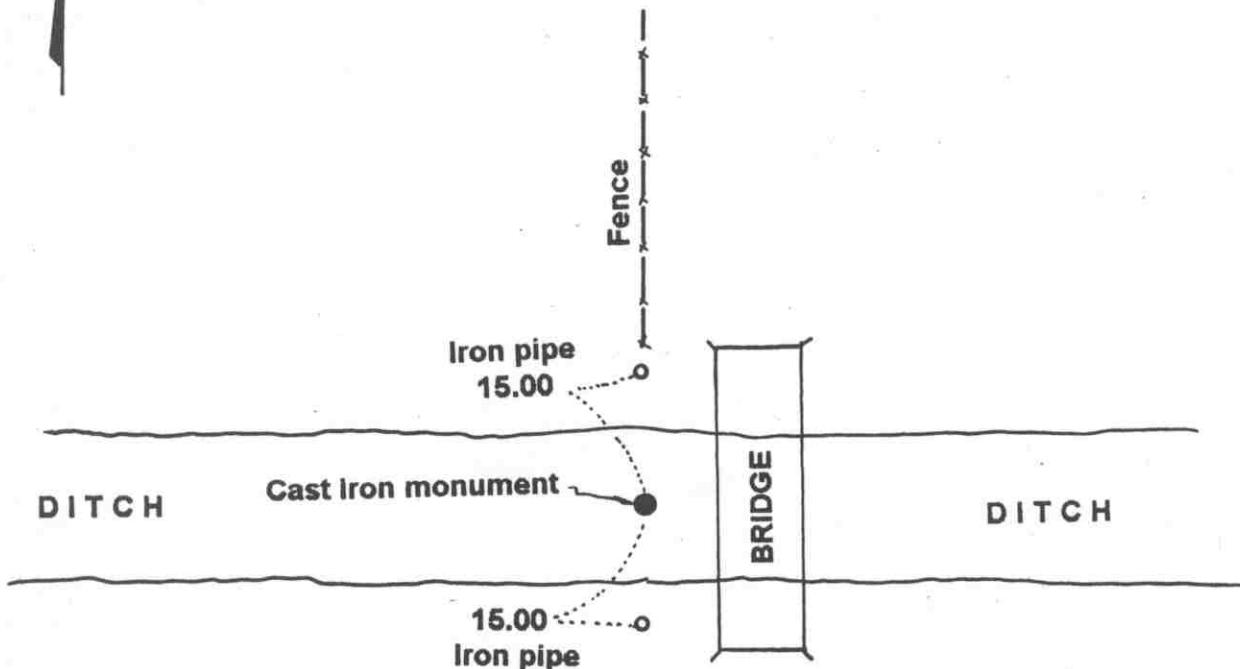
March 29, 1995. We checked the reference ties.

Certificate of Location of Government Corner

NORTH QUARTER corner, Section 4, Township 115 North, Range 27 West

SKETCH OF REFERENCE TIES (NO SCALE)

SECTION 33, T. 116 N., R. 27 W.



SECTION 4, T. 115 N., R. 27 W.

Statement of evidence relative to this corner location on sheet 2

I hereby certify that this document was prepared by me or under my direct supervision.

Willard Pellinen
Willard Pellinen
McLeod County Surveyor
License No. 9626.

Date June 9, 1995

OFFICE OF THE COUNTY RECORDER
MCLEOD COUNTY, MINNESOTA

I hereby certify that this document was filed in this office at 2 o'clock P. M. on the 13th day of June 19 95.

GARREN OSTLIE HILDFR, MCLEOD COUNTY RECORDER

County Recorder

By Phyllis Sopkowiak, Deputy.

Document No. 266252

Certificate of Location of Government Corner
North Quarter Corner, Section 4, Township 115 North, Range 27 West

1855. John Ryan of the General Land Office established this corner. He set a a post at the corner (at the west edge of a swamp) and marked an 8 inch and a 12 inch aspen for bearing trees.

September, 1969. Dickman Knutson, county surveyor, set a McLeod County cast iron monument in the center of a east-west ditch in line with a fence to the north. Mr. Elde, Mr. Kulmann and Mr. Engelman, area land owners, all stated this was the correct location of the government corner. Knutson took available reference ties.

March 29, 1995. We checked the reference ties.

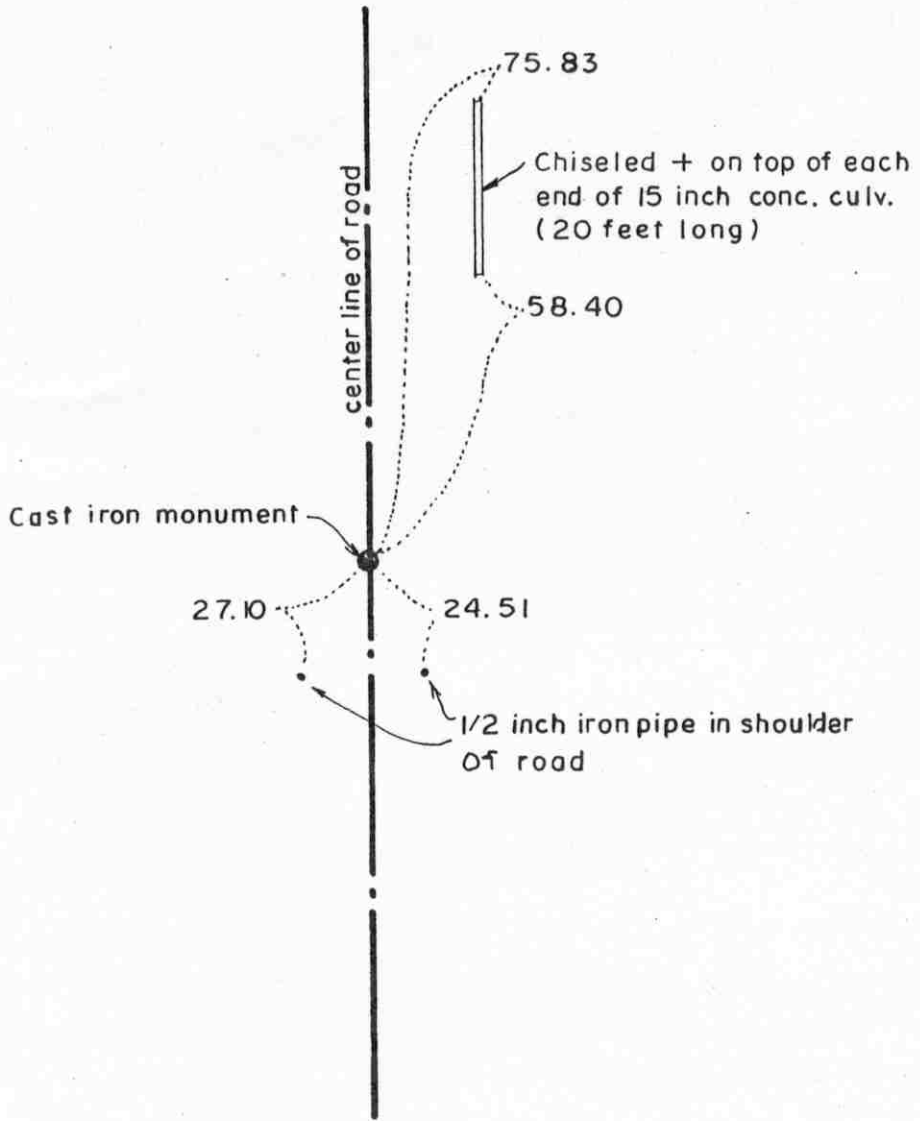
Certificate of Location of Government Corner

EAST QUARTER corner, Section 5, Township 115 North, Range 27 West

SKETCH OF REFERENCE TIES (NO SCALE)

SECTION 5

SECTION 4



Statement of evidence relative to this corner location on sheet 2

I hereby certify that this document was prepared by me or under my direct supervision.

Willard Pellinen
Willard Pellinen
McLeod County Surveyor
License No. 9626.

Date Jan. 10, 1995

OFFICE OF THE COUNTY RECORDER
MCLEOD COUNTY, MINNESOTA

I hereby certify that this document was filed in this office at 9 o'clock A. M. on the 13th day of January, 19 95.

(Carmen) Helmi Mulder, County Recorder

By _____, Deputy.

Document No. 263696

Certificate of Location of Government Corner
East Quarter Corner, Section 5, Township 115 North, Range 27 West

1856. E. N. Darling of the General Land Office originally established this corner. He set a post and marked 2 oaks for bearing trees.

February, 1975. Dickman Knutson, county surveyor, measured the east line of Section 5 and set the east quarter corner midway and on line between the section corners. No occupation lines running east or west at the corner. Knutson set an iron pipe at the corner.

August 31, 1982. We replaced the iron pipe set by Knutson with a McLeod County cast iron monument and took reference ties.

Certificate of Location of Government Corner

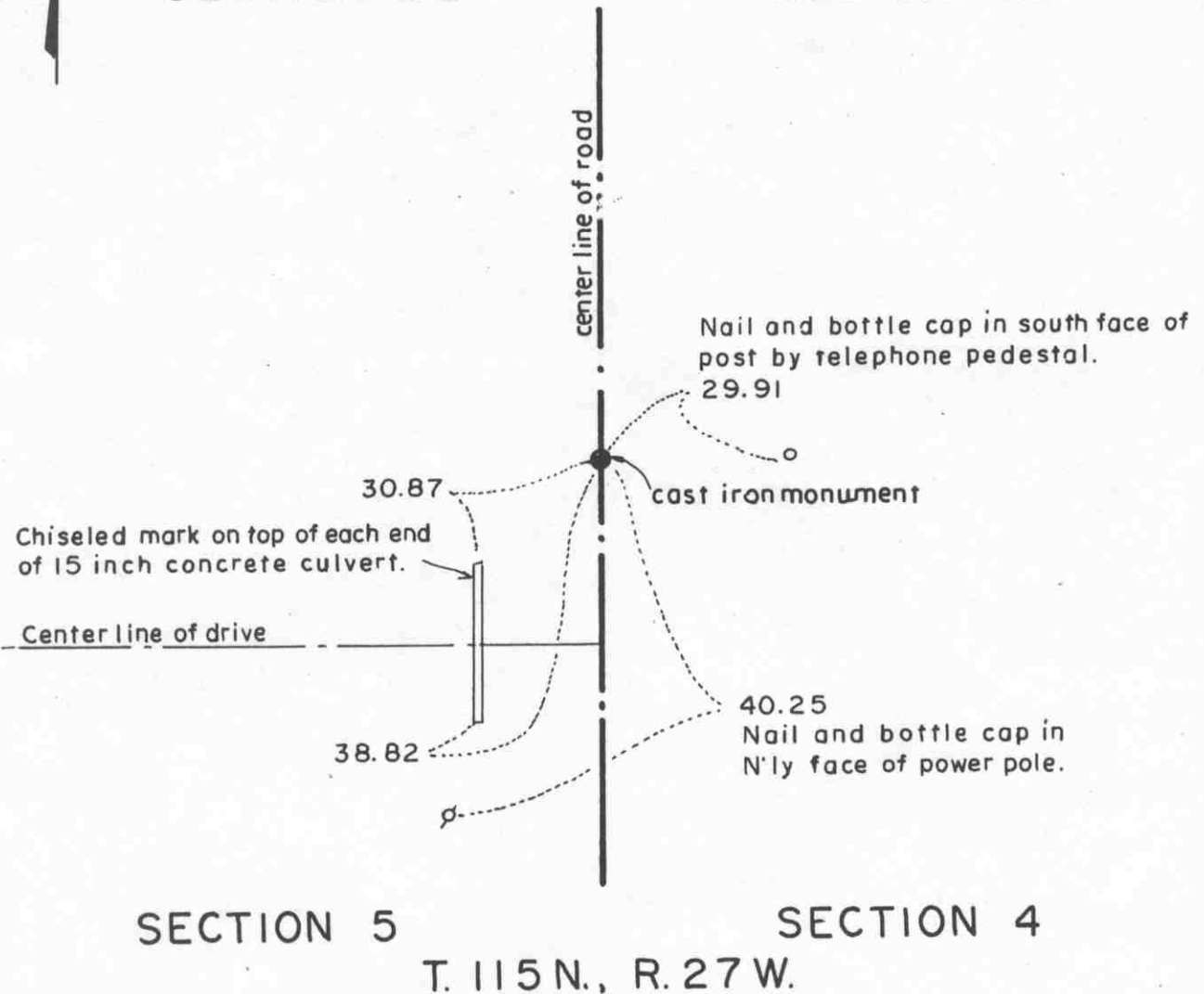
NORTHEAST corner, Section 5, Township 115 North, Range 27 West

SKETCH OF REFERENCE TIES (NO SCALE)

T. 116N., R. 27 W.

SECTION 32

SECTION 33



SECTION 5

SECTION 4

T. 115 N., R. 27 W.

Statement of evidence relative to this corner location on sheet 2

I hereby certify that this document was prepared by me or under my direct supervision.

Willard Pellinen

Willard Pellinen
McLeod County Surveyor
License No. 9626.

Date April 17, 1995

OFFICE OF THE COUNTY RECORDER
MCLEOD COUNTY, MINNESOTA

I hereby certify that this document was filed in this office at 9 o'clock A. M. on the 24th day of Apr 19 95.

Carmen Estlie Mulder, County Recorder

By _____, Deputy.

Document No. 265298

Certificate of Location of Government Corner
Northeast Corner, Section 5, Township 115 North, Range 27 West

1855. John Ryan of the General Land Office established this corner. He set a post and marked 3 aspens and a cherry tree for bearing trees.

September 12, 1969. Dickman Knutson, county surveyor, set a temporary corner at location as per adjoining land owners.

October, 1969. Knutson dug for the corner and found a stone down 2 feet and he took reference ties.

February 3, 1995. We checked the reference ties to the monument.

Certificate of Location of Government Corner

North Quarter corner, Section 5, Township 115 North, Range 27 West

SKETCH OF REFERENCE TIES (NO SCALE)

SECTION 32, T. 116 N., R. 27 W.



Nail & bottle cap in south face of 24 inch elm.

Rock Pile

0.43

Nail & bottle cap in south face of 8 inch tree.

19.15

6±

Cast iron monument

Field line

SECTION 5, T. 115 N., R. 27 W.

Statement of evidence relative to this corner location on sheet 2

I hereby certify that this document was prepared by me or under my direct supervision.

Willard Pellinen

Willard Pellinen
McLeod County Surveyor
License No. 9626.

Date Nov. 6, 1995

OFFICE OF THE COUNTY RECORDER
MCLEOD COUNTY, MINNESOTA **269325**

I hereby certify that this document was filed in this office at 9 o'clock A M. on the 14th day of November 19 95.

Carmen Estlie M. Jelder County Recorder

By _____, Deputy.

Document No. _____

Certificate of Location of Government Corner

North Quarter Corner, Section 5, Township 115 North, Range 27 West

July, 1855. John Ryan of the General Land Office established this corner. He set a post and marked a 10 inch aspen and a 7 inch aspen for bearing trees.

1969, Adjoining land owners have accepted the intersection of field lines as the quarter corner.

September 12, 1969. Dickman Knutson, county surveyor, found a pointed stone at the intersection of field lines north, east and west. The stone was 5 inches in diameter and 14 inches long, pointed at the top.

Knutson replaced the stone with a McLeod County cast iron monument and took available reference ties.

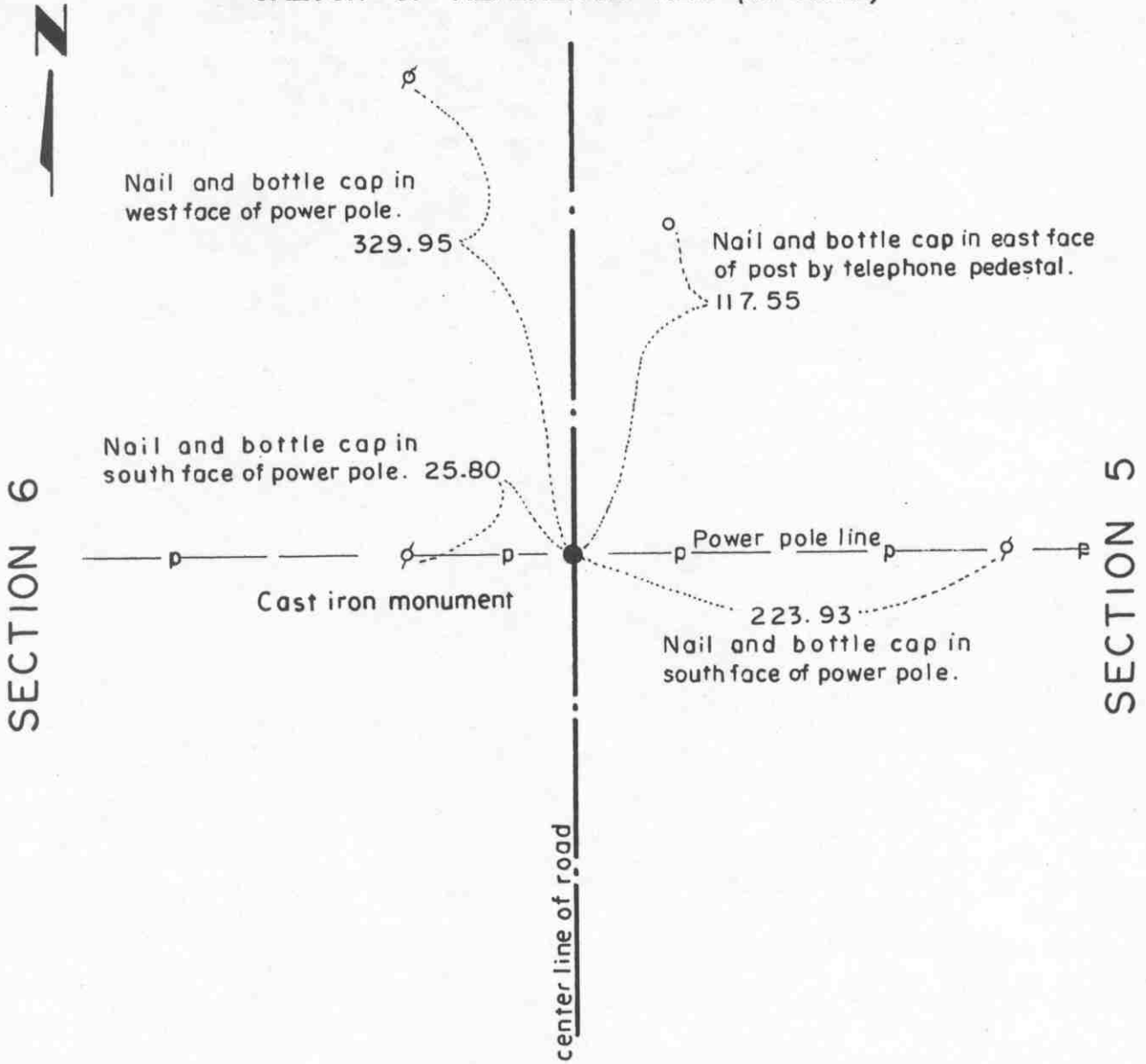
February, 1995. The monument set by Knutson is accepted as marking the location of the government corner. It fits long standing occupation lines (the field lines) and it perpetuates the location of an older monument (the stone).

July 5, 1995. We found the monument in good condition and took new available reference ties.

Certificate of Location of Government Corner

East Quarter corner, Section 6 , Township 115 North, Range 27 West

SKETCH OF REFERENCE TIES (NO SCALE)



Statement of evidence relative to this corner location on sheet 2

I hereby certify that this document was prepared by me or under my direct supervision.

Willard Pellinen
 Willard Pellinen
 McLeod County Surveyor
 License No. 9626.

Date April 17, 1995

**OFFICE OF THE COUNTY RECORDER
 MCLEOD COUNTY, MINNESOTA**

I hereby certify that this document was filed in this office at 9 o'clock A M. on the 24th day of Apr 19 95 .

Carmen Patricia Mulder, County Recorder

By _____, Deputy.

Document No. 265300

Certificate of Location of Government Corner
East Quarter Corner, Section 6, Township 115 North, Range 27 West

1856. E. N. Darling of the General Land Office established this corner. He set a post and marked two 12 inch aspens for bearing trees.

1937. E. L. Higgins, surveyor, set a steel axle at the corner using his 1900 survey distance from the north.

April, 1971. Dickman Knutson, county surveyor, excavated for the corner (John Tupa from Hutchinson with a backhoe). They found the steel axle set by Higgins and took reference ties.

October, 1971. Knutson set a McLeod County cast iron monument and took additional ties.

January, 1995. The monument set by Knutson is accepted as marking the location of the government corner. It fits a long standing occupation line, the road, and it perpetuates the location of an older monument, the axle.

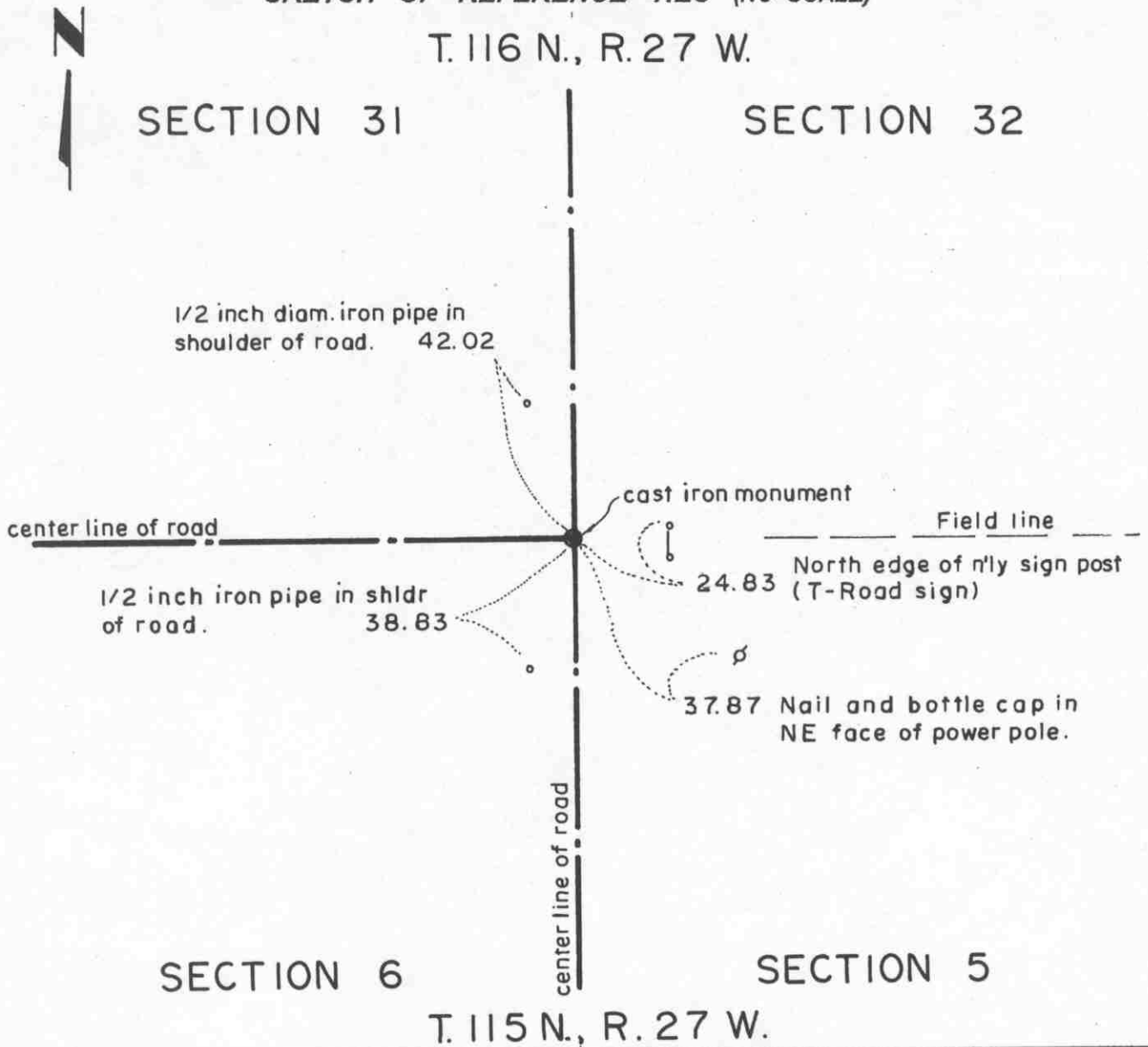
February 2, 1995. We checked the reference ties.

Certificate of Location of Government Corner

NORTHEAST corner, Section 6, Township 115 North, Range 27 West

SKETCH OF REFERENCE TIES (NO SCALE)

T. 116 N., R. 27 W.



Statement of evidence relative to this corner location on sheet 2

I hereby certify that this document was prepared by me or under my direct supervision.

Willard Pellinen
 Willard Pellinen
 McLeod County Surveyor
 License No. 9626.

Date April 17, 1995

OFFICE OF THE COUNTY RECORDER
 MCLEOD COUNTY, MINNESOTA

I hereby certify that this document was filed in this office at 9 o'clock A .M. on the 24th day of Apr 19 95.

Carmen (Patricia) Mulder County Recorder

By _____, Deputy.

Document No. 265299

Certificate of Location of Government Corner
Northeast Corner, Section 6, Township 115 North, Range 27 West

1855. John Ryan of the General Land Office established this corner. He set a post and marked a 6 inch elm, a 7 inch aspen, a 12 inch oak and a 16 inch oak for bearing trees.

September, 1969. Dickman Knutson, county surveyor, found a stone and wood stake. He took reference ties and directly below the stone he found a 1 inch diameter solid iron pin. The iron was 3 feet below the surface of the road. He left the iron in place and set a McLeod County cast iron monument over it.

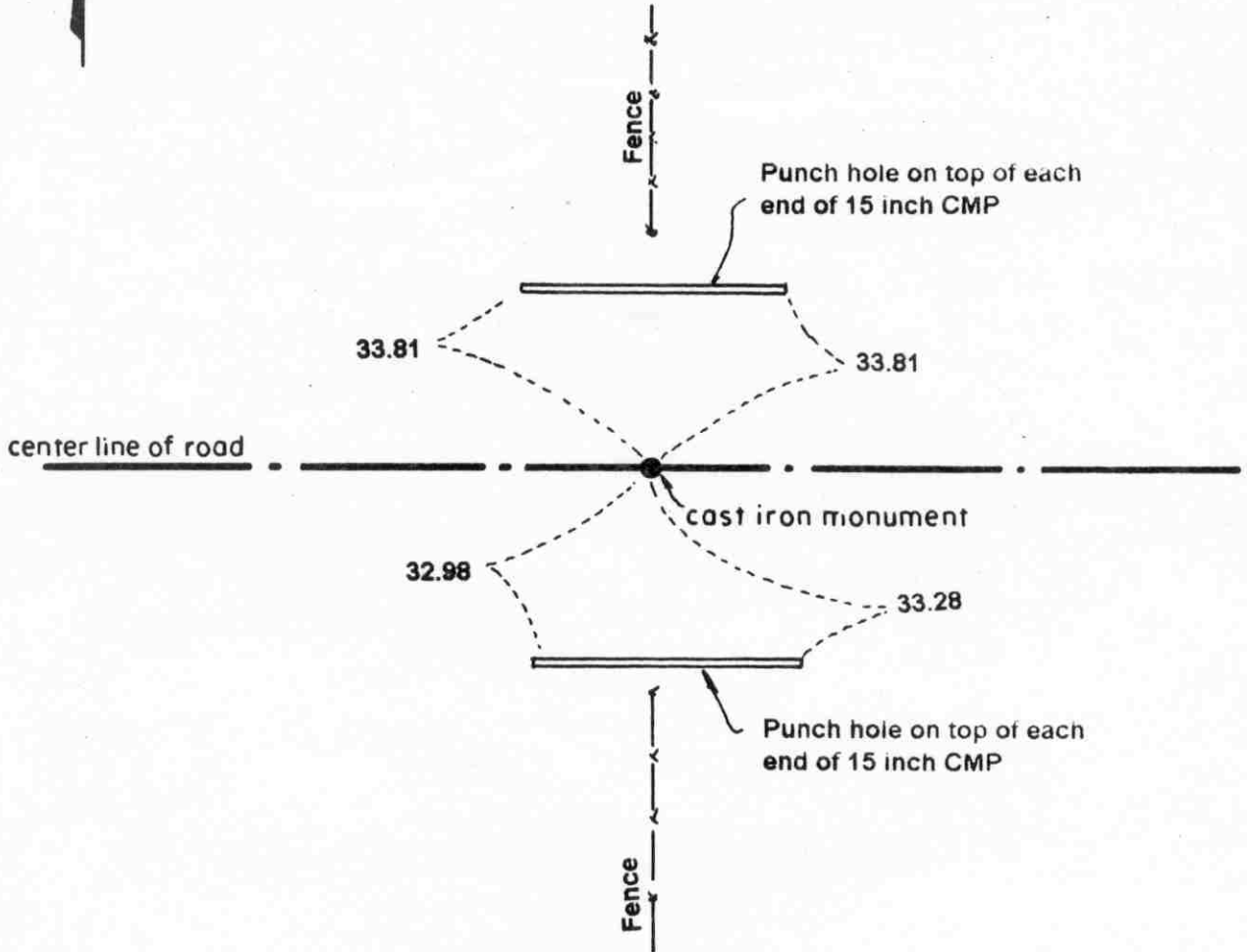
February 2, 1995. We found the monument in good condition down 6 inches below the surface of the gravel road and took new reference ties.

Certificate of Location of Government Corner

NORTH QUARTER corner, Section 6, Township 115 North, Range 27 West

SKETCH OF REFERENCE TIES (NO SCALE)

SECTION 31, T.116N., R. 27 W.



SECTION 6, T.115N., R. 27 W.

Statement of evidence relative to this corner location on sheet 2

I hereby certify that this document was prepared by me or under my direct supervision.

Willard Pellinen
Willard Pellinen
McLeod County Surveyor
License No. 9626.

Date Aug. 7, 1995

OFFICE OF THE COUNTY RECORDER
MCLEOD COUNTY, MINNESOTA

I hereby certify that this document was filed in this office at 9 o'clock A. M. on the 07th day of August 19 95.

GARMEN OSTLIE MULDER, MCLEOD COUNTY RECORDER

County Recorder

By Phyllis Jopkowski, Deputy.

Document No. 267423

Certificate of Location of Government Corner
North Quarter Corner, Section 6, Township 115 North, Range 27 West

1855. John Ryan of the General Land Office established this corner. He set a post in a marsh and marked an 8 inch aspen and a 14 inch oak for bearing trees.

September 11, 1969. Dickman Knutson, county surveyor set a temporary corner on the center of the east-west road in line with fences north and south. This point has been accepted by adjoining land owners as the quarter corner.

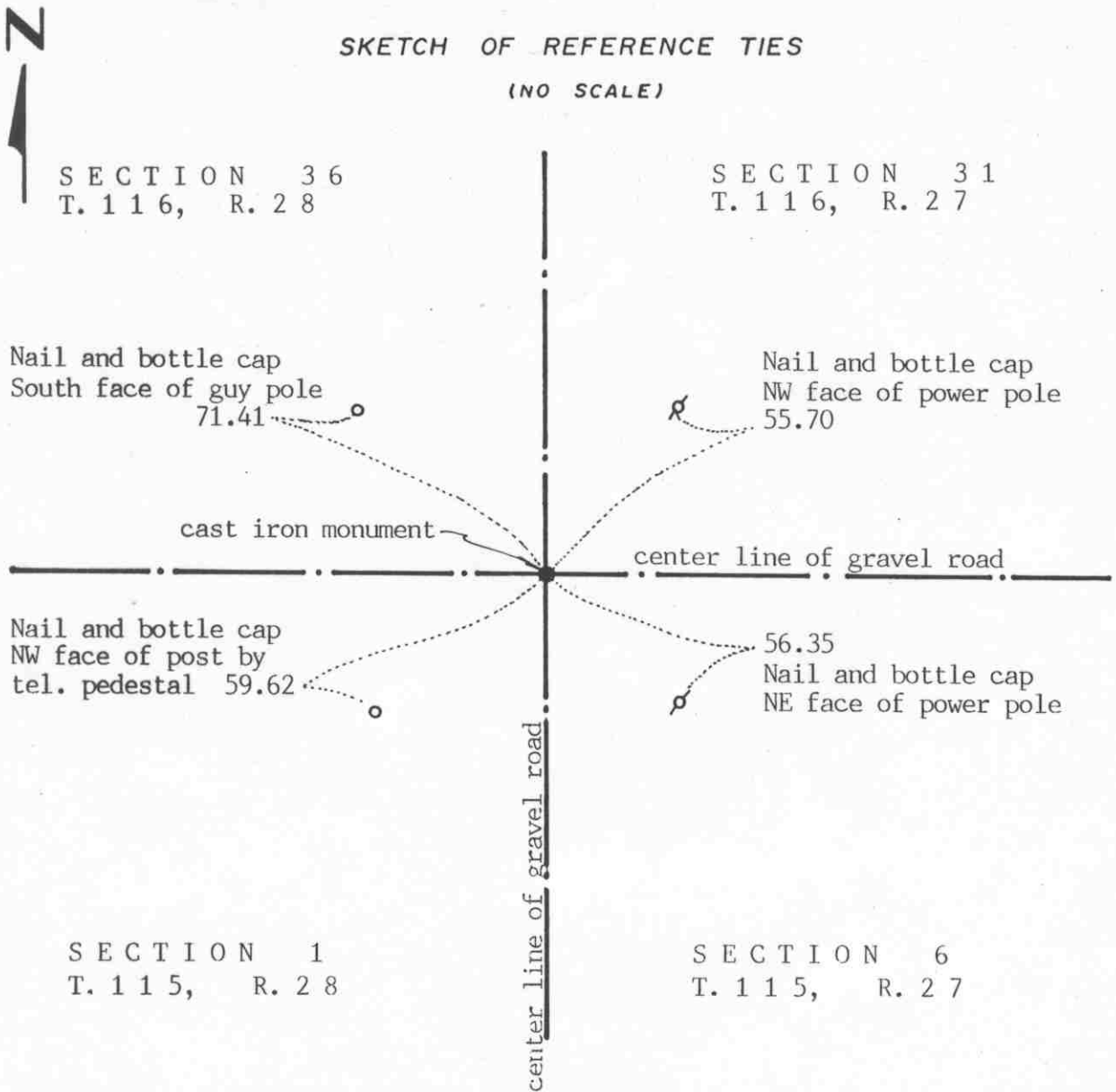
April 16, 1970. Knutson dug for the corner (John Tupa from Hutchinson with a backhoe.) Down 1 1/2 feet below the surface of the road they found a wood stake. They took available reference ties.

1970. Knutson set a McLeod County cast iron monument at the corner.

March 29, 1995. We found iron pipe down 6 inches below the surface of the gravel road. Pipe over cast iron monument. We took new available reference ties.

Certificate of Location of Government Corner

SKETCH OF REFERENCE TIES
(NO SCALE)



Statement of evidence relative to this corner location on sheet 2

I hereby certify that this document was prepared by me or under my direct supervision.

Willard Pellinen
Willard Pellinen
McLeod County Surveyor
License No. 9626
Date Oct. 3, 1991

OFFICE OF THE COUNTY RECORDER
MCLEOD COUNTY, MINNESOTA.

I hereby certify that this document was filed in this office at 1 o'clock P.M. on the 21st day of Oct, 1991.

Carmen Hotliu, County Recorder
By _____, Deputy

Document No. 241584

Certificate of Location of Government Corner

1855. John Ryan of the General Land Office set a post and marked 3 elms and an ironwood for bearing trees.

January, 1900. E.L.Higgins found an old stake 2 rods from a fence corner and put in a stone and a stake. He measured 2661 feet to the east quarter corner of Section 1.

December, 1968. McCombs Knutson Associates (Dickman Knutson, county surveyor) measured the east line of Section 1 and set a temporary corner at the center line intersection of the roads.

1969. Knutson dug for the corner but found nothing.

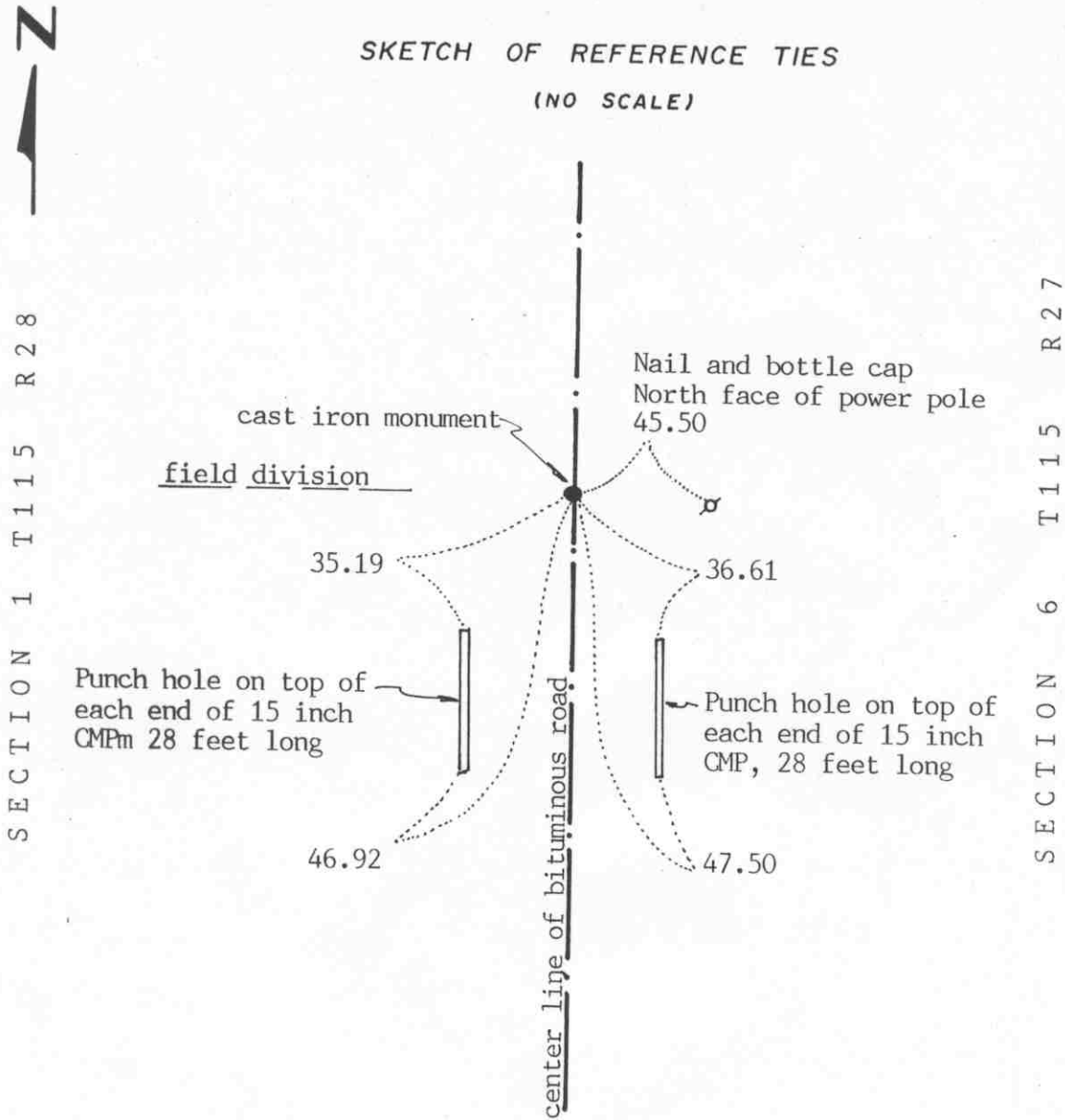
October 26, 1970. Knutson set a McLeod County cast iron monument at the center line intersection of the roads and took available reference ties.

November, 1990. We found the monument in good condition and measured 2661.05 feet to the east quarter corner compared with 2661 feet by Higgins. We took new reference ties.

There being no evidence to the contrary, we accept the monument set by Knutson as marking the section corner. It is on old occupation lines, the center lines of the roads and the distance to the east quarter corner is the same as in 1900.

Certificate of Location of Government Corner

SKETCH OF REFERENCE TIES
(NO SCALE)



Statement of evidence relative to this corner location on sheet 2

I hereby certify that this document was prepared by me or under my direct supervision.

Willard Pellinen
Willard Pellinen
McLeod County Surveyor
License No. 9626

Date Sept. 2, 1991

OFFICE OF THE COUNTY RECORDER
MCLEOD COUNTY, MINNESOTA.

I hereby certify that this document was filed in this office at 1:30 o'clock P. M. on the 3rd day of Oct, 1991.

Sarmen Ostlie, County Recorder

By _____, Deputy

Document No. 241301

Certificate of Location of Government Corner

1855. John Ryan of the General Land Office set a post and marked 2 oaks for bearing trees.

January 3, 1900. E. L. Higgins, county surveyor, found a stake and a bearing tree. He measured 2661 feet to the north east corner of Section 1.

1970. McCombs Knutson Associates (Dickman Knutson, county surveyor) found an iron pipe and replaced it with a McLeod County cast iron monument.

July 28, 1987. We found the monument in good condition 4 inches below the bituminous surface. All reference ties had been destroyed so we took new available ties.

June 2, 1990. We found the monument in good condition and checked the reference ties. This monument is 2661.05 feet south of the northeast corner of the section compared with 2661 by Higgins in 1900. It is 1.15 feet west of a straight line between the section corners.

We accept the iron pipe found by Knutson as having perpetuated the correct location of the quarter corner. It fits occupation lines, the center of the road in line with a field division to the west. It is also very close to the 1900 distance from the northeast corner.